

# PHEIM ASIA EX-JAPAN ISLAMIC FUND

Islamic Equity Fund

NEVER FULLY INVEST AT ALL TIMES

## PHEIM

An equity expert in ASEAN & Asia Region  
for more than 29 years

Pheim's Investment Philosophy to Fine-Tune Value Investing



We believe  
an equity fund should trim its equity exposure  
near market peaks in order to preserve capital,  
and to be fully invested near market troughs

But, it should

**Never Fully Invest at All Times**



THE WINNER OF

5



REFINITIV LIPPER  
FUND AWARDS

Equity Asia Pacific Ex-Japan Category

**MALAYSIA ISLAMIC**

**3-YEAR  
PERIOD**

Ending 31 December 2019

**5-YEAR  
PERIOD**

Ending December 2011

**GLOBAL ISLAMIC**

**3-YEAR  
PERIOD**

Ending 31 December 2019

**2-YEAR  
PERIOD**

Ending December 2014

**1-YEAR  
PERIOD**

Ending December 2013

REFINITIV



REFINITIV



**MALAYSIA ISLAMIC**  
Equity Asia Pacific Ex-Japan Category

**GLOBAL ISLAMIC**  
Equity Asia Pacific Ex-Japan Category

Source: Lipper IM

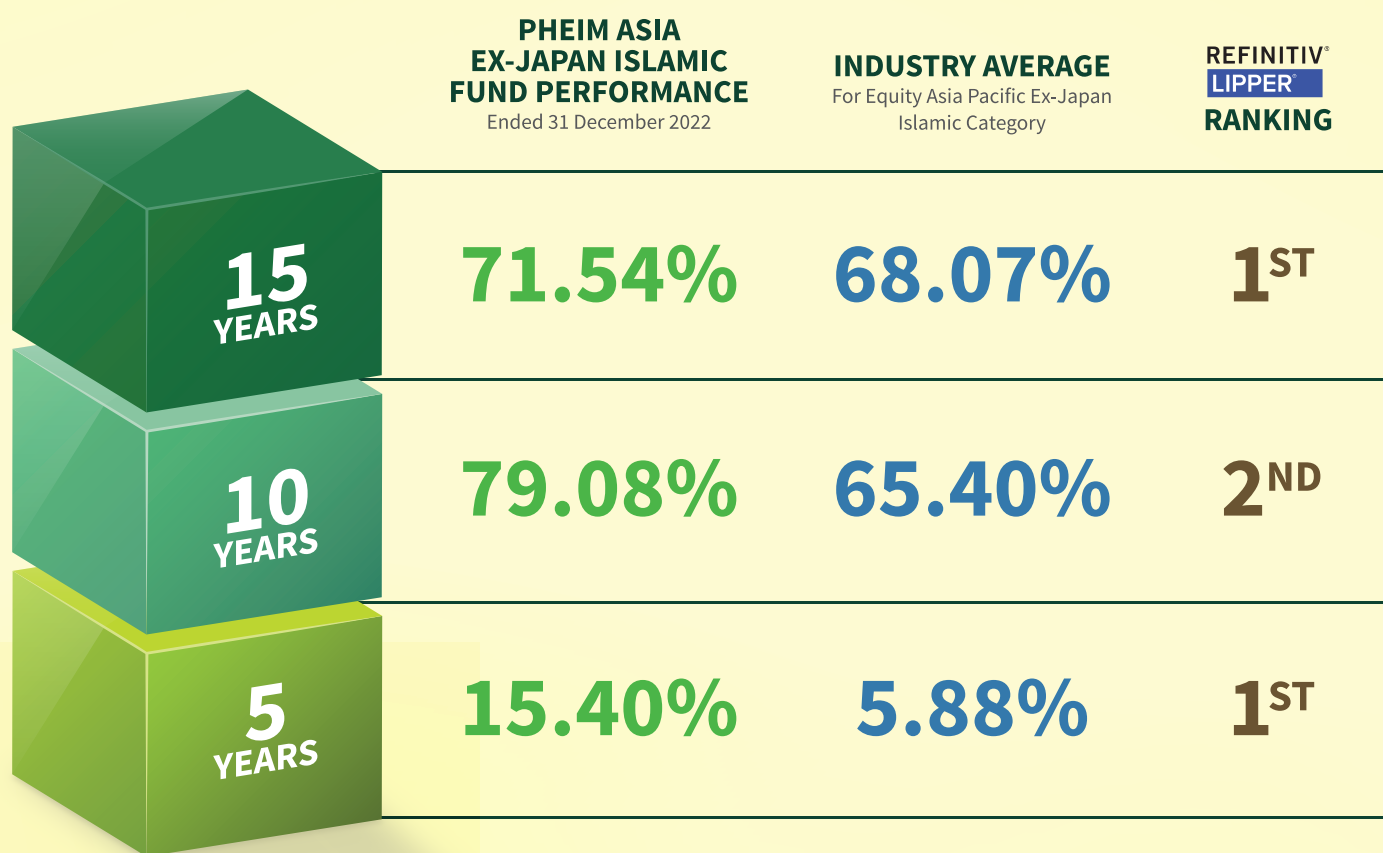
YOUR NEED IS OUR FOCUS

# PHEIM ASIA EX-JAPAN ISLAMIC FUND

Islamic Equity Fund

NEVER FULLY INVEST AT ALL TIMES

## FUND PERFORMANCE AS AT 31 DECEMBER 2022



Source: Lipper IM



Fund Managed by:  
**PHEIM ASSET MANAGEMENT SDN BHD** 199301014824 (269564-A)  
[www.pheim.com.my](http://www.pheim.com.my)  
Tel: +603 2031 6407

Fund Distributed by:  
**PHEIM UNIT TRUSTS BERHAD** 200101010163 (545919-A)  
[www.pheimunittrusts.com](http://www.pheimunittrusts.com)  
Tel: +603 2142 8888  
Email: [support@pheimunittrusts.com](mailto:support@pheimunittrusts.com)

The above information has not been reviewed by the SC and is subject to the relevant warning, disclaimer, qualification or terms and conditions stated herein. This advertisement is solely for information purposes. It is not intended as an offer or solicitation for the purchase or sale of any financial instrument, investment product or service. The information contained herein does not have any regard to the specific investment objectives, financial situation or particular needs of any person. Views, thoughts and opinions expressed herein belong solely to the author and not necessarily to the author's employer. We assume no responsibility or liability for any errors or omissions in the content of this marketing material. Investors may wish to seek advice from a financial advisor before making any investment decision. Past performance is not indicative of future results. Investors should not be solely relied on ratings or rankings provided to make an investment decision. An investment is subject to investment risks, including the possible loss of the principal amount invested.